

LIFE SAFETY PLAN

1/8" = 1'-0"

LIFE SAFETY NOTES:

- All 36" doors have a minimum 34" clear opening. All 44" doors have a minimum of 40" clear opening. All 72" doors have a minimum of 68" clear opening. Capacities exceed occupant load.
- Maximum travel distance is less than 250 feet.
- Egress width calculations per 2020 Section 1005.3.2 "other egress components @ 0.2"/occupant".
- Walkways outside exterior doors are flush with finished floor of building.
- T.D. denotes travel distance.
- Knox Box shall be Martin County Fire Department approved.
- Doors #10, 11 & 15 are 3'-0" wide.
- Doors #7 & 8 are pair 3'-0" wide.

LIFE SAFETY PLAN LEGEND

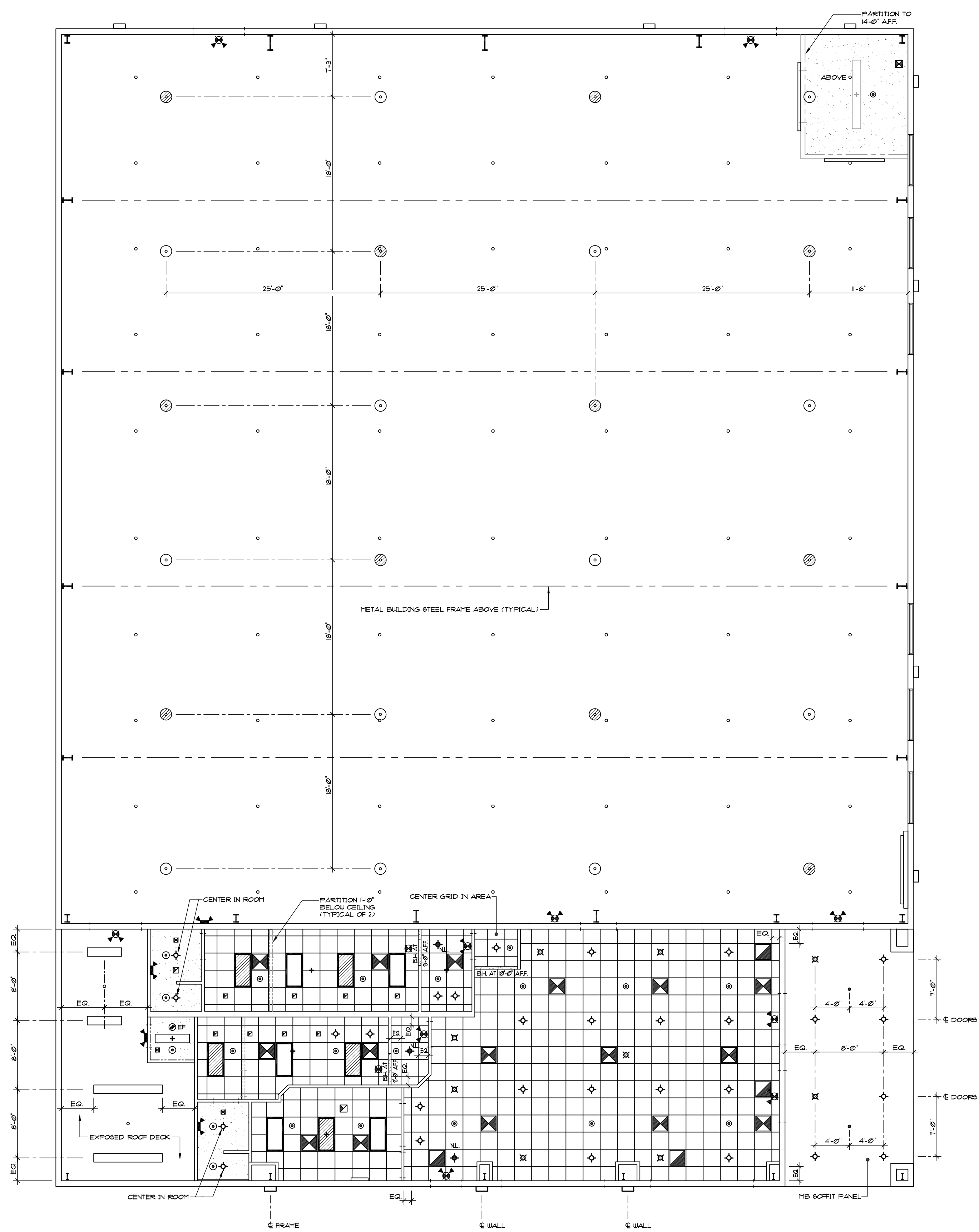
EXIT LIGHT	
DUAL HEAD EMERGENCY LIGHT	
EXIT/EMERGENCY LIGHT	
LIGHT WITH EMERGENCY BALLAST	
NIGHT LIGHT (ALWAYS ON)	

EXITING LEGEND

- DOOR NUMBER PER FLOOR PLAN & DOOR SCHEDULE
- TOTAL OCCUPANTS AT EXIT OR EXIT ROUTE

LIFE SAFETY EGRESS DOOR CALCULATIONS:

DOOR # 1	205 persons x 0.2' = 41.0' with 68" provided
DOOR # 3	90 persons x 0.2' = 18.0' with 68" provided
DOOR # 4	94 persons x 0.2' = 18.8" with 40" provided
DOOR # 5	53 persons x 0.2' = 10.6" with 68" provided
DOOR # 6	154 persons x 0.2' = 30.8" with 34" provided
DOOR # 7	2 persons x 0.2' = 1.4" with 68" provided



REFLECTED CEILING PLAN

1/8" = 1'-0"

REFLECTED CEILING PLAN NOTES:

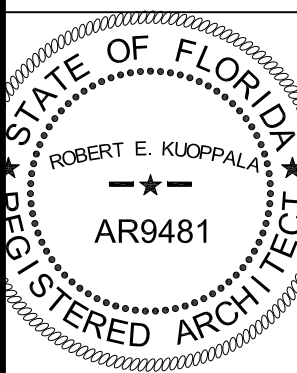
- Entire building shall be fire sprinkled. Heads at Gym and Closet #2 shall be turned up to roof structure. Heads at acoustical tile and gyboard ceilings shall be turned down in ceiling. Head turned up above ceilings not shown. See plans prepared by Life Safety Management (under separate contract with owner). Submit shop drawings, with hydraulic calculations to Building/Fire Departments and architect for review. Interlock fire sprinkler system to fire alarm system.
- * denotes center of room and starting location of grid.
- Area above ceiling is not a return air plenum.
- Roof insulation is R=19 fiberglass batts with vinyl face below roofing.

REFLECTED CEILING PLAN LEGEND

	LIGHT IN ACOUSTICAL TILE CEILING
	SURFACE MOUNTED OR CHAIN MOUNTED LIGHT
	EXIT LIGHT
	DUAL HEAD EMERGENCY LIGHT
	EXIT/EMERGENCY LIGHT
	LIGHT WITH EMERGENCY BALLAST
	SUPPLY AIR GRILLE
	RETURN AIR GRILLE
	EXHAUST GRILLE
	TRANSFER AIR GRILLE
	RECESSED HI-HAT LIGHT
	WALL PACK (SEE E-2)
	NIGHT LIGHT (ALWAYS ON)
	INTERIOR FIRE SPRINKLER HEAD IN CEILING
	EXTERIOR FIRE SPRINKLER HEAD IN SOFFIT
	INTERIOR FIRE SPRINKLER HEAD TURNED UP TOWARD ROOF STRUCTURE

REVISIONS	BY

KUOPPALA & ASSOCIATES, P.A.
ROBERT E. KUOPPALA
 ARCHITECTS
 LICENSE #AAC-001656
 925 SOUTH MILITARY TRAIL, SUITE D-10
 WEST PALM BEACH, FLORIDA 33415
 (561) 682-1909



NEW ATHLETIC / FELLOWSHIP BUILDING
HOBE SOUND BIBLE COLLEGE
 11924 S.E. GOMEZ AVE.
 HOBE SOUND, MARTIN COUNTY, FLORIDA

DRAWN	GW
CHECKED	REK
DATE	FEBRUARY 23, 2022
SCALE	AS NOTED
COMM. NO.	18-06
SHEET	A-4